




# MODEL.6710 USB DRIVER INSTRUCTION MANUAL




01001 0 1
1 2 .07

1: Insert the CD-ROM into the disk driver. Then open the

folder  **8710 USB Driver**. If your system is 32bit, double

click  **dpinst32.exe**  
**Driver Package I...**  
**Microsoft Corpor...** to begin the installation. If your system is

64bit, double click  **dpinst64**  
**Driver Package Installer**  
**Microsoft Corporation** to begin the installation. After  
the screen shown in Figure1-1 is displayed, press "Next".

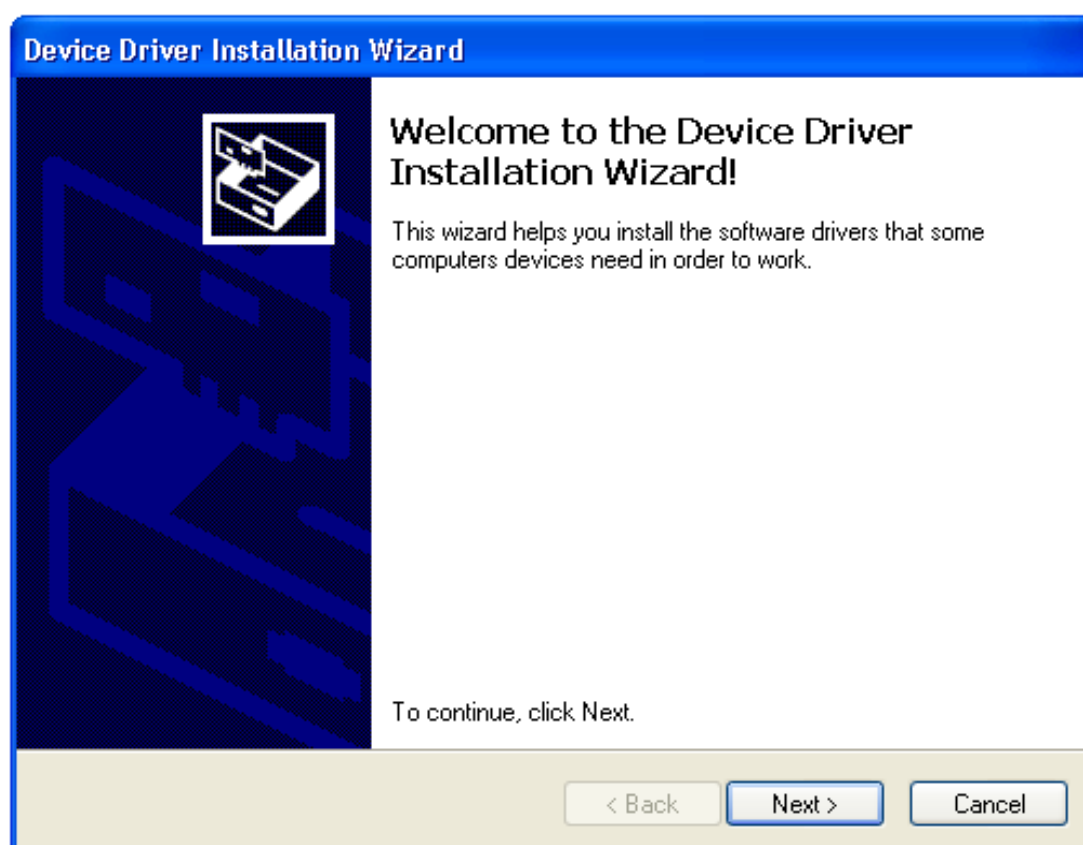


Figure1-1

2: Then the screen shown in Figure 1-2 appears.

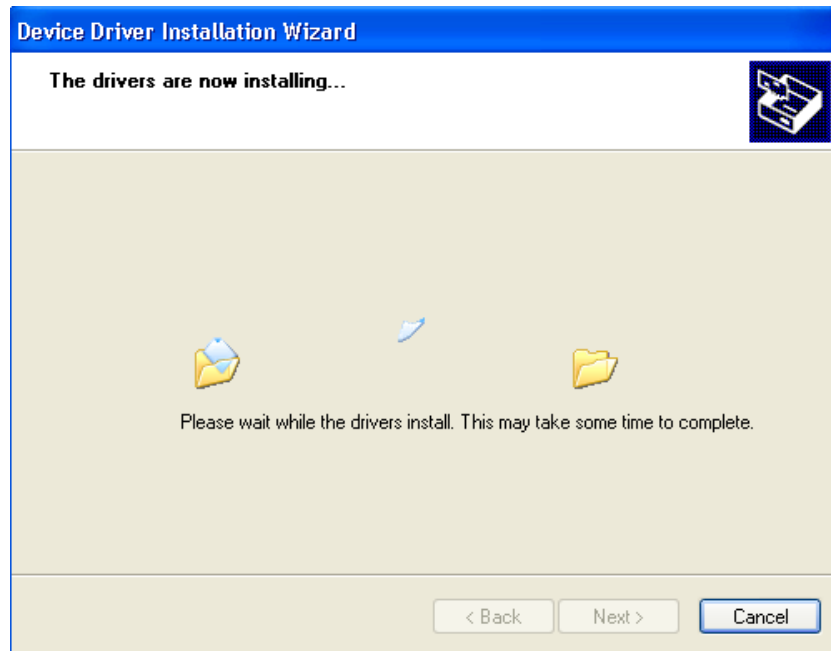


Figure1-2

3 : When “Completing the Device Driver Installation Wizard” appears as shown in Figure 1-3, press “Finish” to complete the installation process.



Figure 1-3